

**AERODROME CHART**

37°26'45" N  
 127°06'52" E

ELEV **28** m

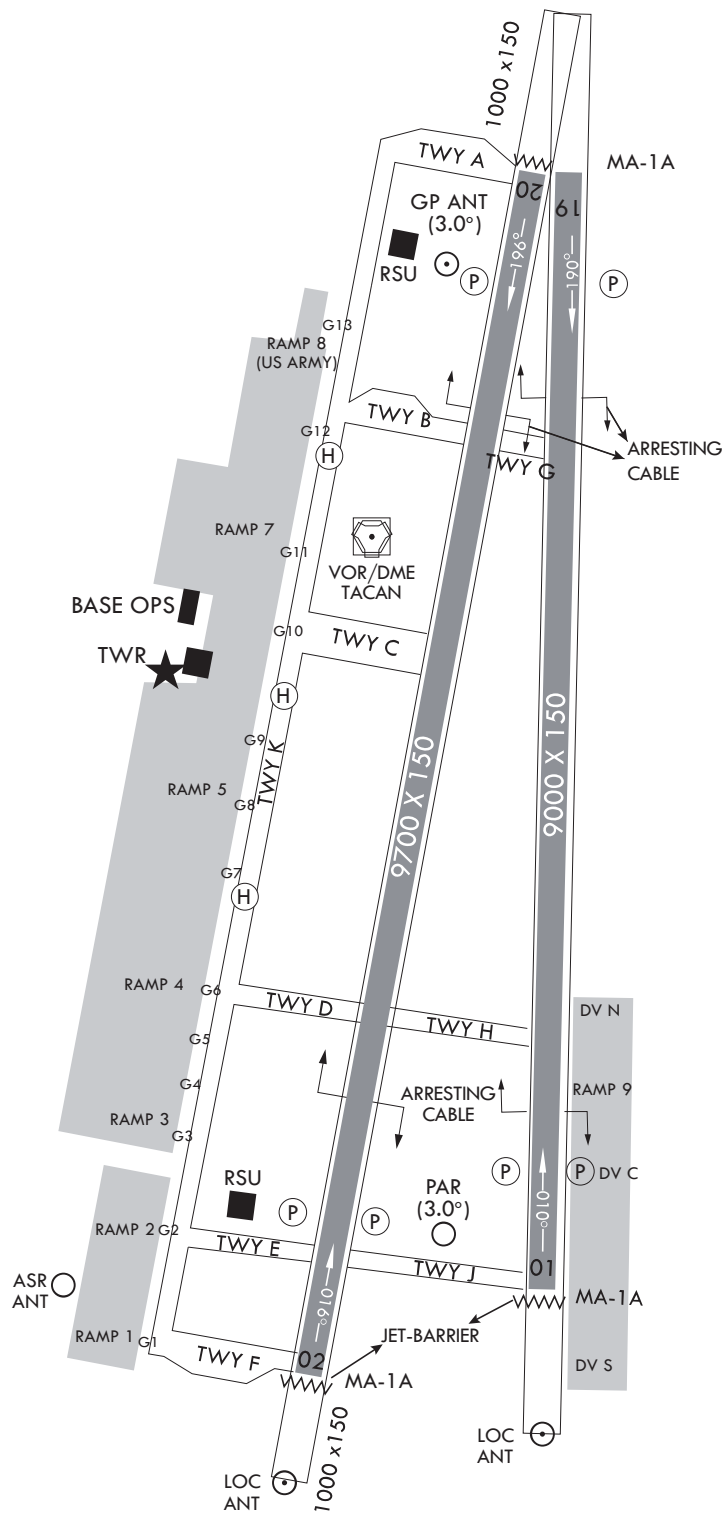
TWR	234.5	236.6	126.2
GND	275.8	121.85	

**SEOUL/Seoul**

ELEVATIONS IN METERS  
 DIMENSION IN FEET  
 BEARINGS ARE MAGNETIC



VAR 8° W 2017  
 ANNUAL RATE OF CHANGE  
 4' W



**NOT TO SCALE**

Change : Information of MAG VAR and location of TACAN.